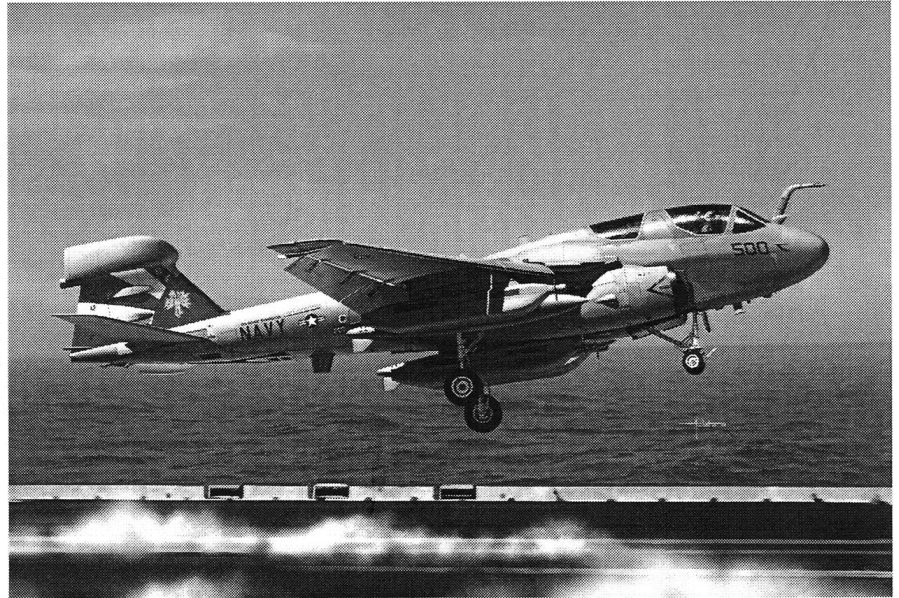


# EA-6B

## Grumman EA-6B Prowler



### 1/48 EA-6B

The EA-6B Prowler is an outstanding variant of Grumman's award-winning A-6 Intruder. Externally, it is similar to the basic A-6 with the same wings and major differences of a 1.37m fuselage extension for a 4-seat cockpit and a fin-tip pod to house electronic equipment; internally, it is a completely different aircraft.

Nicknamed Gliding Electric Show, the EA-6B carries huge amounts of onboard equipment for one primary mission – ensuring survivability of strike aircraft and fleet surface units of the US Navy, Air Force and the Marine. By jamming enemy radars and communications during a combat, it serves as an important element in protecting the US forces as well as suppressing enemy air defenses (SEAD). Combats supported by the EA-6B include operations against Libyan targets in 1986, Operation Desert Storm, Bosnia-Herzegovina, Kosovo, and Operation Iraqi Freedom.

The EA-6B has received numerous upgrades since its career began in 1971. Although the Prowler community is set to begin retirement starting from 2010, continuous transition of existing aircraft to the Improved Capability (ICAP III) configuration remains in progress. This latest upgrade will ensure the EA-6B Prowler remains the world's premier tactical electronic warfare platform in the near future.



Drill



Remove



2 Set



Bend



Optional



Decal



Super Glue



Fill Hole



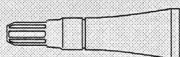
No Cement



Be Careful

#### TOOLS RECOMMENDED

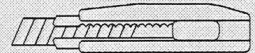
Cement



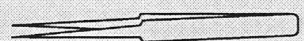
Side Cutter



Modeling Knife



Tweezers

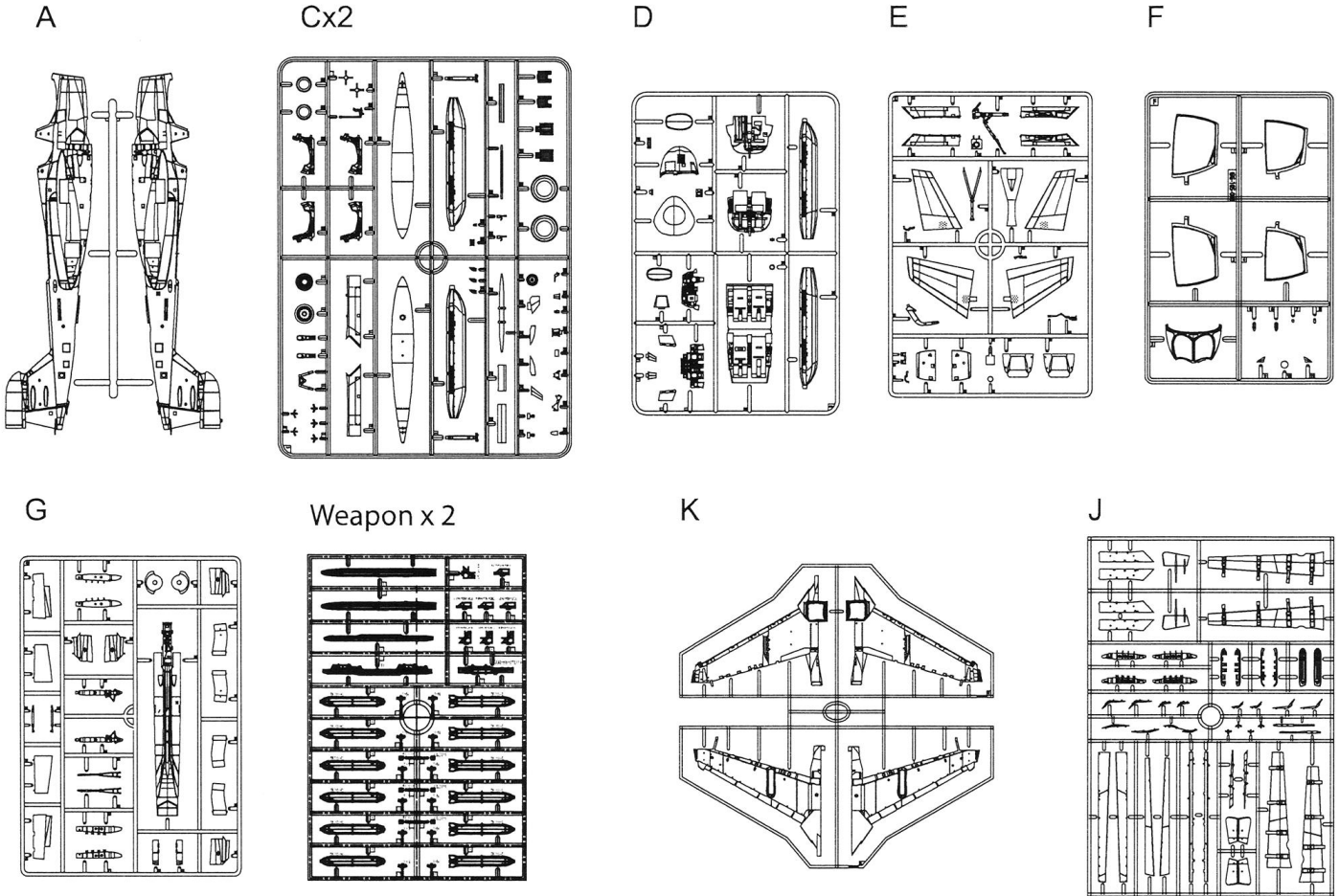


#### CAUTION

- \*Read carefully and fully understand the instructions before commencing assembly.
- \*Keep out of reach of children. Children must not be allowed to put any parts in their mouths, or pull plastic bag over their heads.
- \*When using adhesives and paints, please make sure not to use them in closed room or near the fire.
- \*When assembling this kit, tools including knives are used. Extra care should be taken to avoid injury.

**WARNING: CONTAIN SMALL PARTS NOT FOR CHILDREN UNDER 14 YEARS OF AGE.**

**1/48 SCALE AIRCRAFT SERIES NO: K48044**



**PAINT INDEX**

COLOR	VALLEJO MODEL COLOR	MODEL AIR	GSI CREOS MR. COLOR	ITALERI ARCYLICPAINT	HUMBROL ENAMEL	TAMIYA ENAMEL/ACRYLIC
FLAT BLACK	950	057	33	4768AP	33	XF-18
GLOSS WHITE	951	001	1	4796AP	34	X-2
CLEAR RED	934	-	47	-	1321	X-27
Gray (FS 36320)	-	71047	307	-	126	-
Gray (FS 36270)	-	71048	306	4746AP	64	-
Blue Grey (FS 35237)	-	71049	337	-	145	-
Grey (FS 36375)	990	-	308	-	-	-
Red (FS 31136)	957	-	-	4714AP	-	-
Dark Tan (FS 30140)	825	-	-	-	-	-
Tan (FS 30279)	-	-	-	-	-	-
Light Tan (FS 33475)	-	-	-	-	-	-
Blue (FS 35044)	-	-	-	-	-	-
Yellow (FS 13538)	915	-	329	-	154	-
KHAI GREY	880	-	55	-	-	-
USA OLIVA DRAB	889	-	-	-	-	-
FLAT RED	957	-	327	-	-	-

**950** denotes Vallejo Model Color

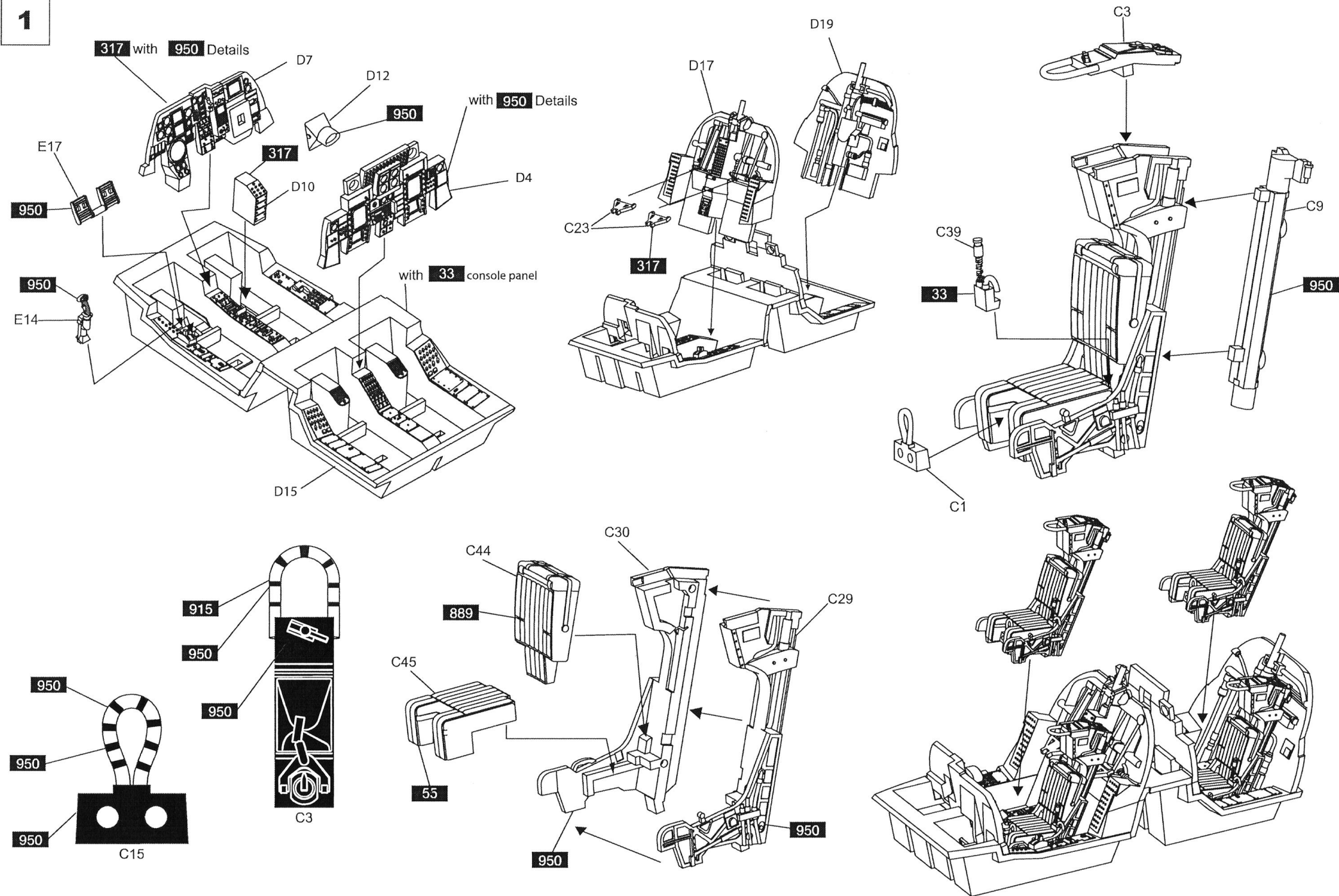
**AFTERMARKET SERVICES CARD**

When requesting replacement parts, please take or send this form to your local dealer so that the parts required can be correctly identified. Please note that specifications and availability are subject to change without notice.

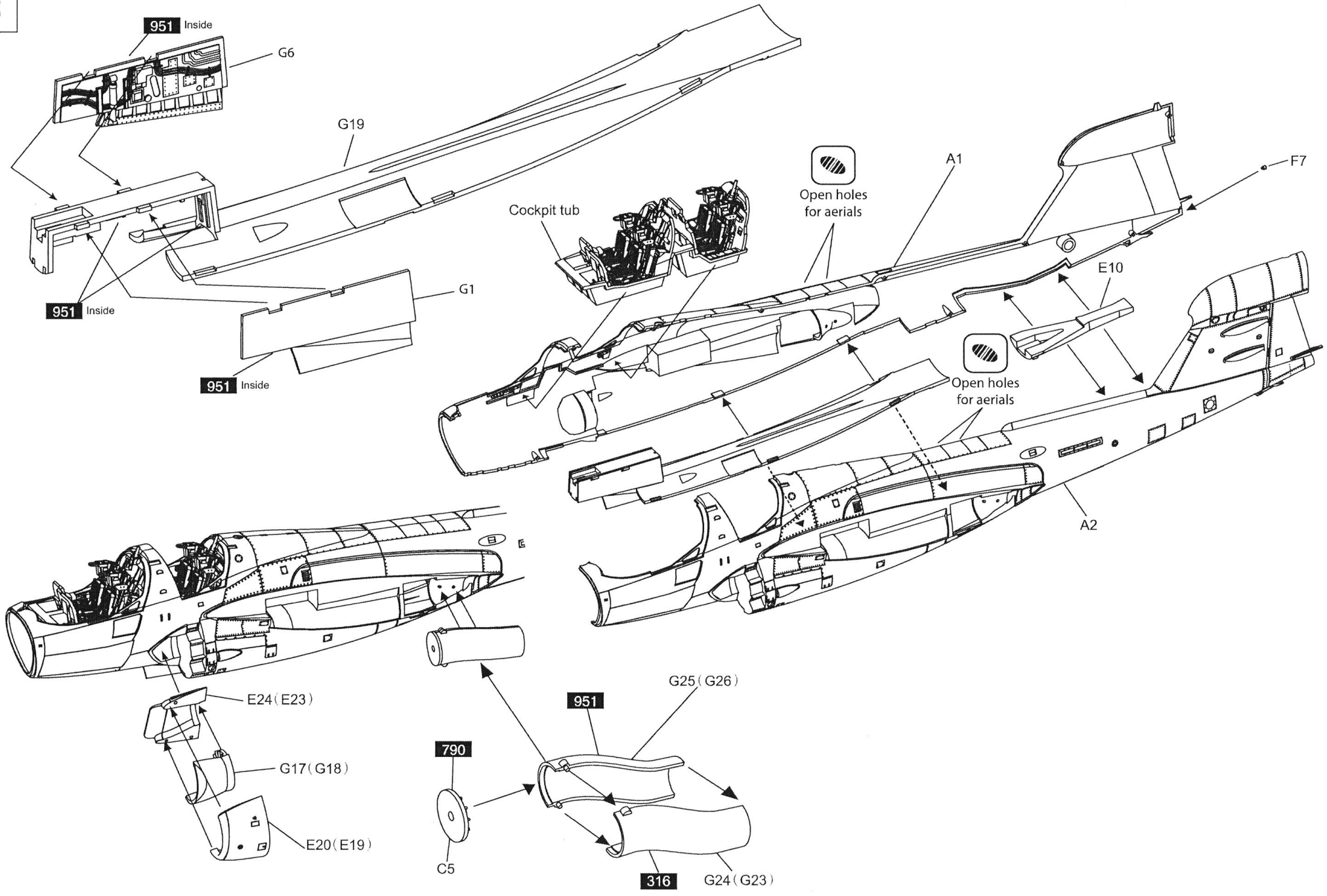
or visit <http://www.kineticmodel.com> for latest information.  
For more information, please contact [services@kineticmodel.com](mailto:services@kineticmodel.com)

Part No.	Item
00-105-001	A
00-105-003	C
00-105-004	D
00-105-005	E
00-105-006	F
00-105-007	G
00-105-028	C
00-105-001	K
00-124-012	J
00-116-001	
01-105-48044	
01-116-001	
03-150-48044	Manual

1

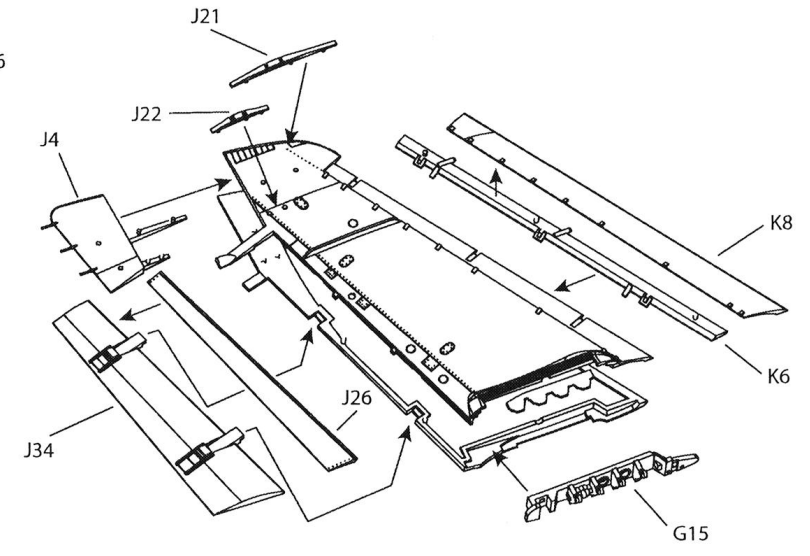
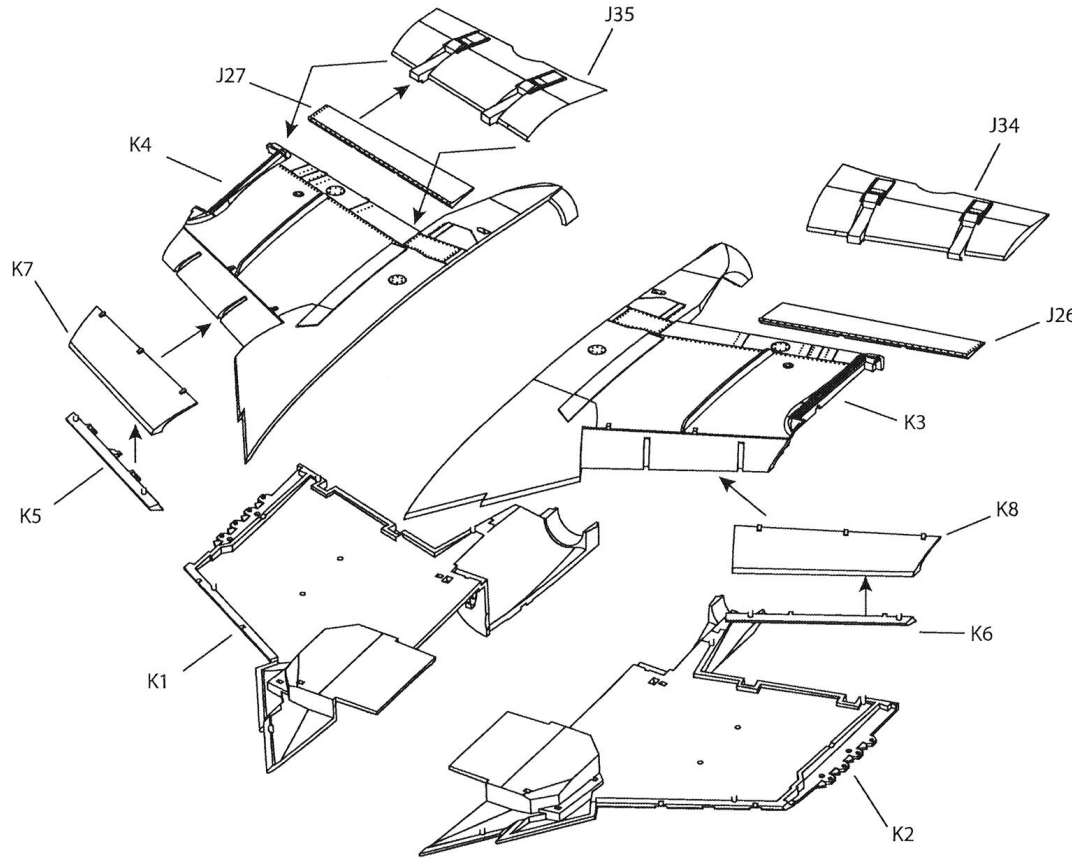
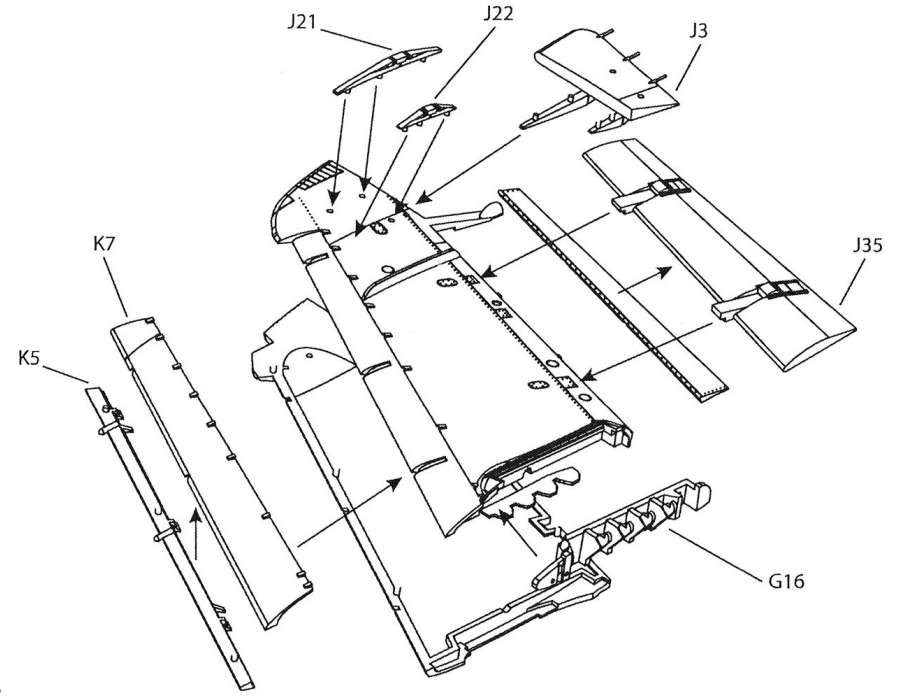
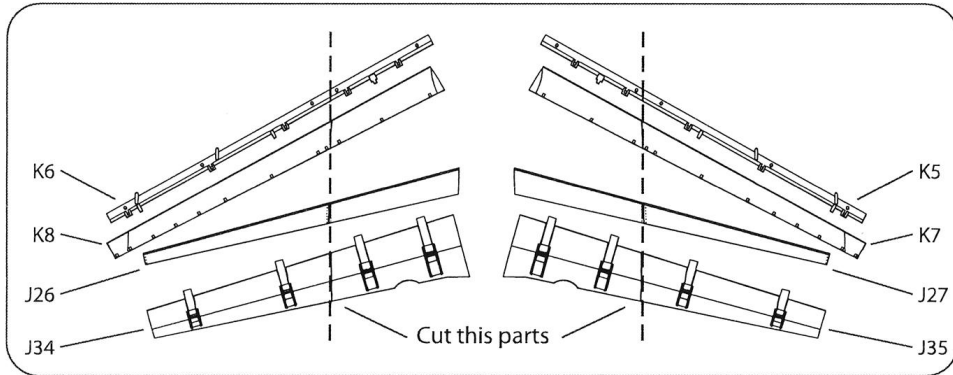


2





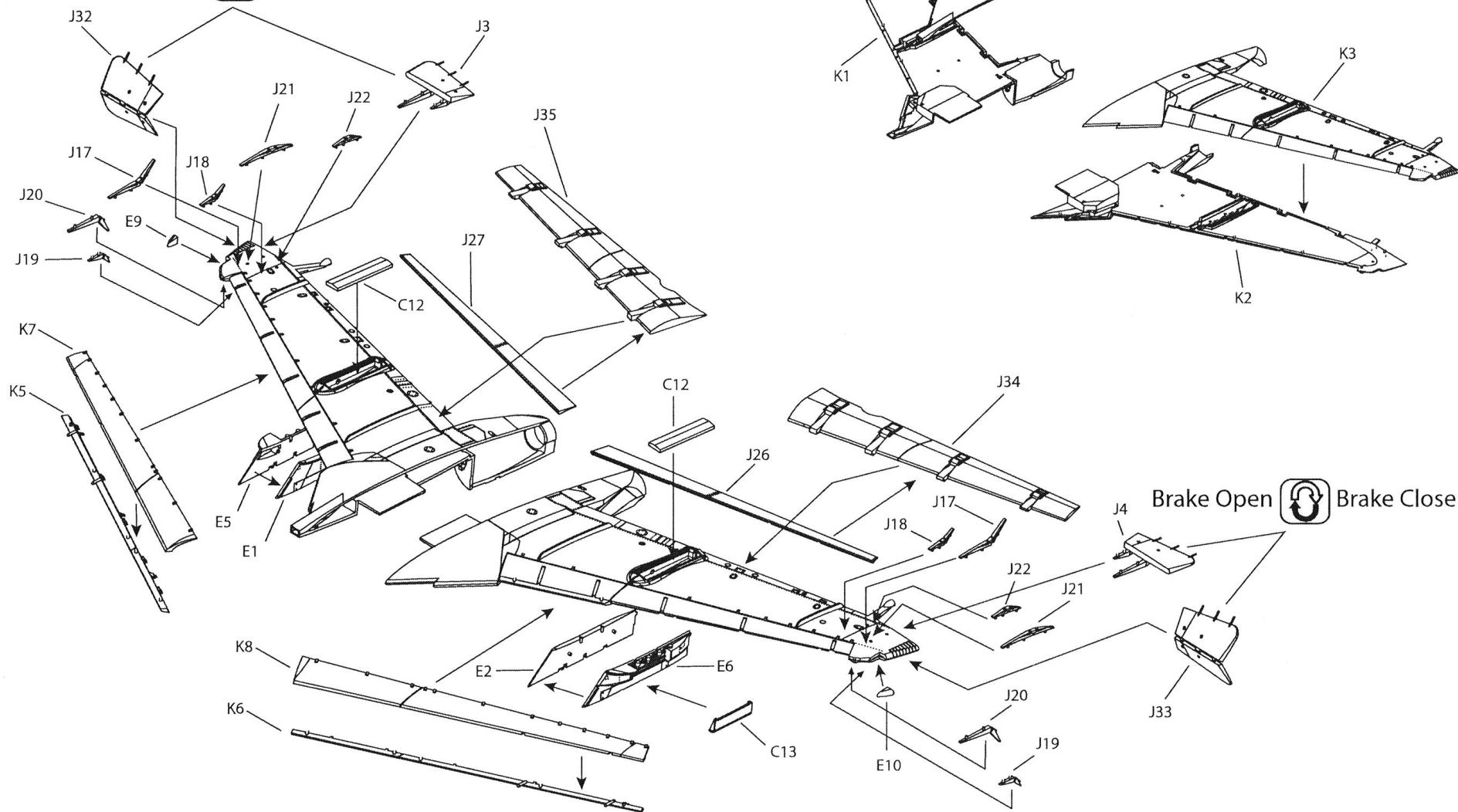
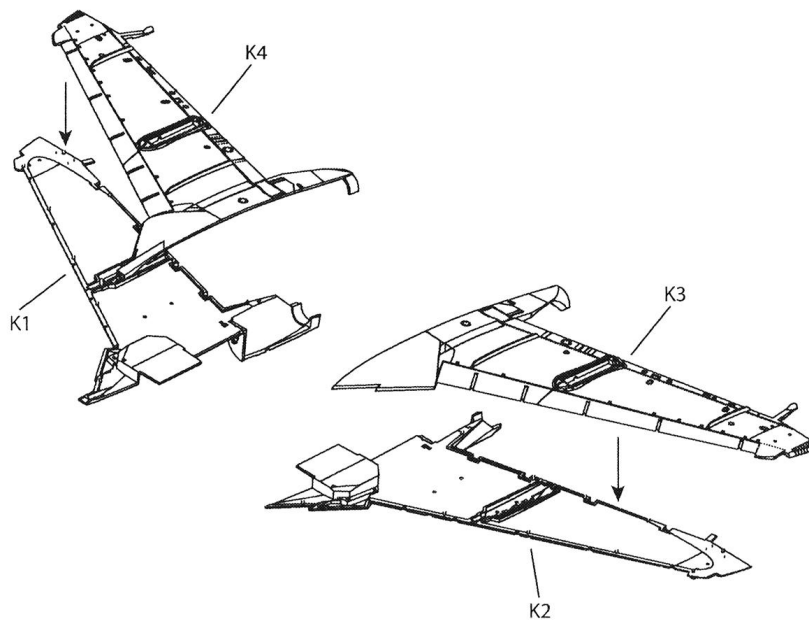
### 3 FOLD WING OPTION



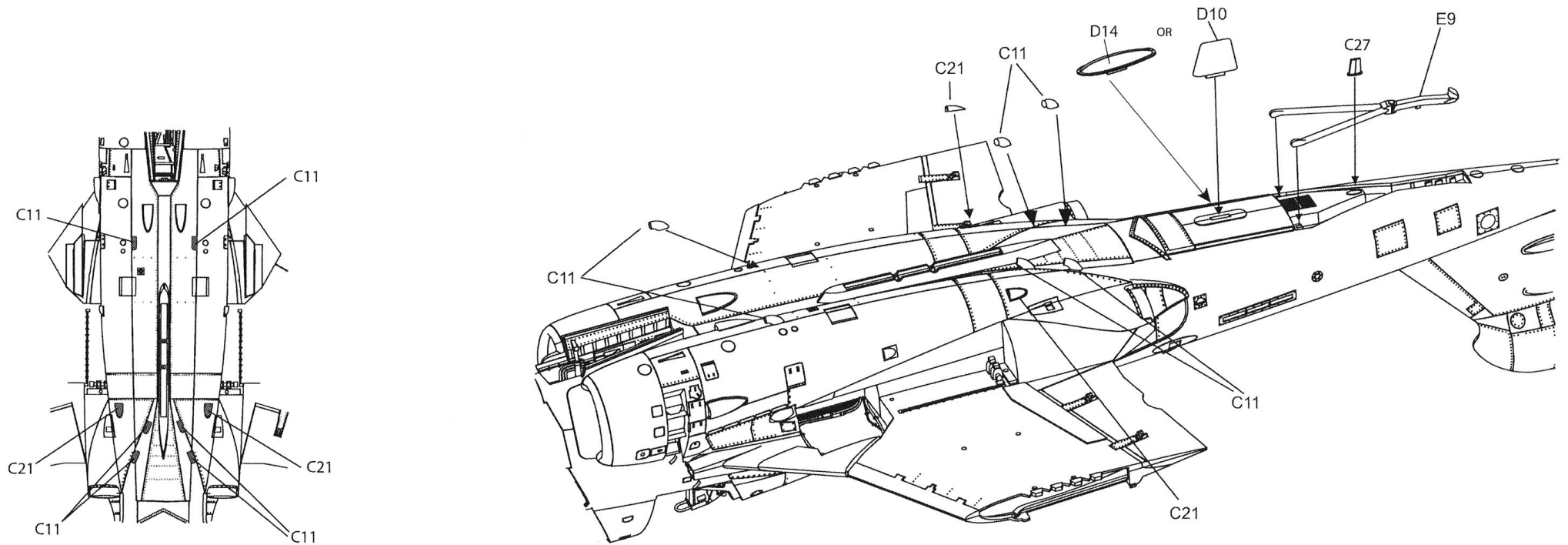
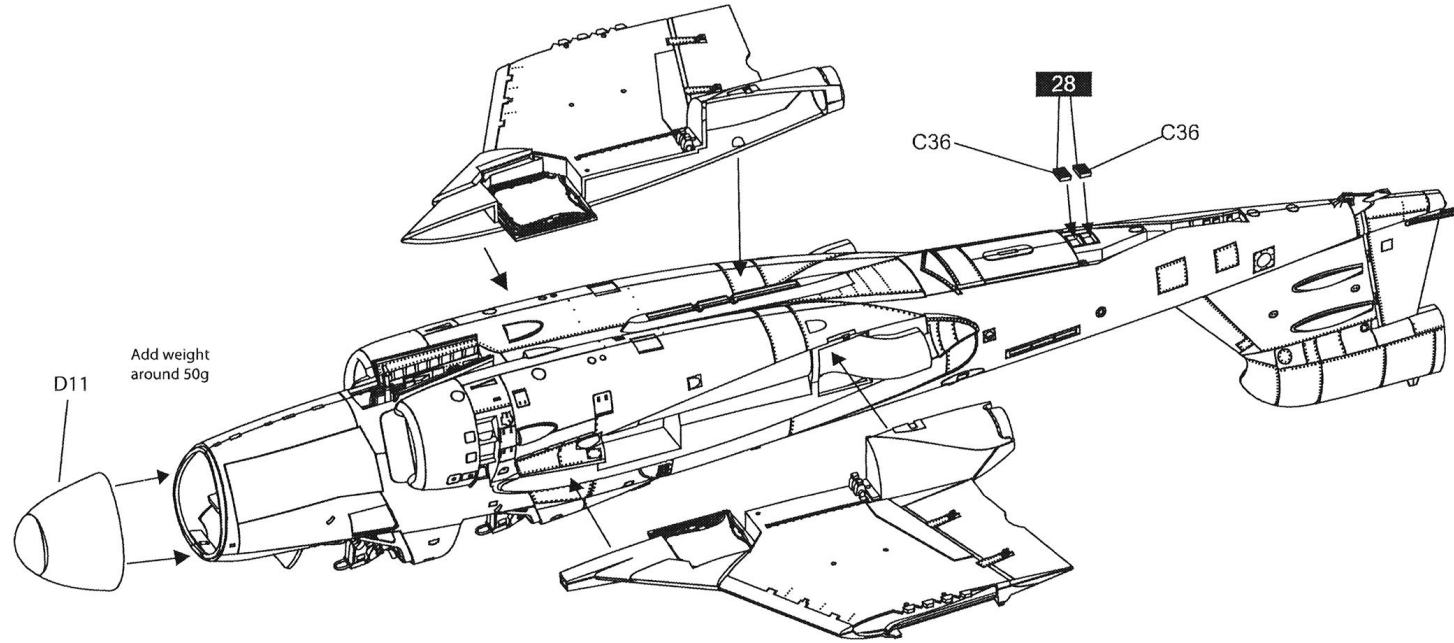
4

# FULL WING EXTEND

Brake Open  Brake Close



5



6

C31  
137

C20  
316

C32  
137

x2

E3

316

E19

F6  
47

C26

C25

D9

C26

E4

F10

C42  
137

C4  
316

C43  
137

G12 (G11)

G10 (G9)

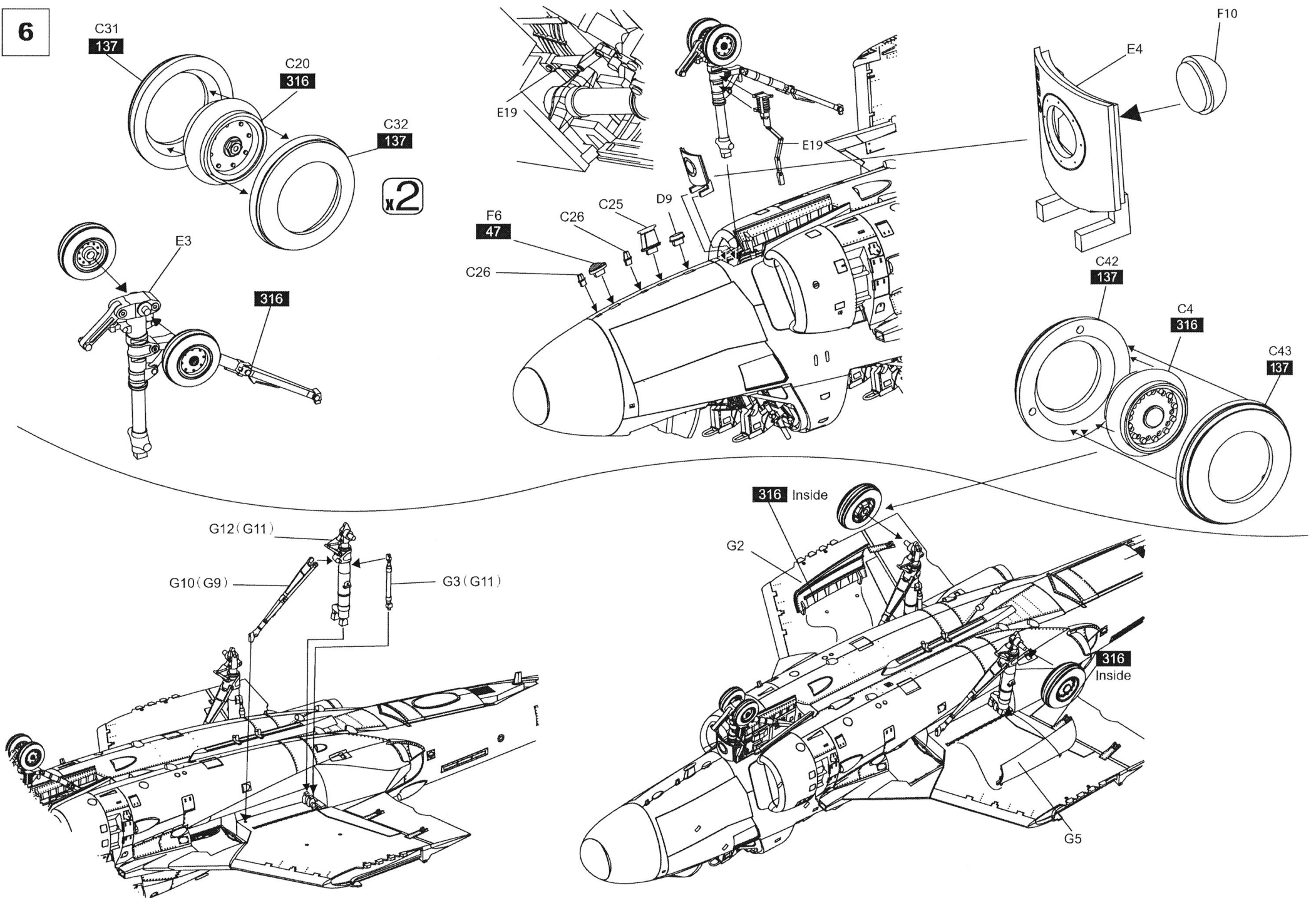
G3 (G11)

316 Inside

G2

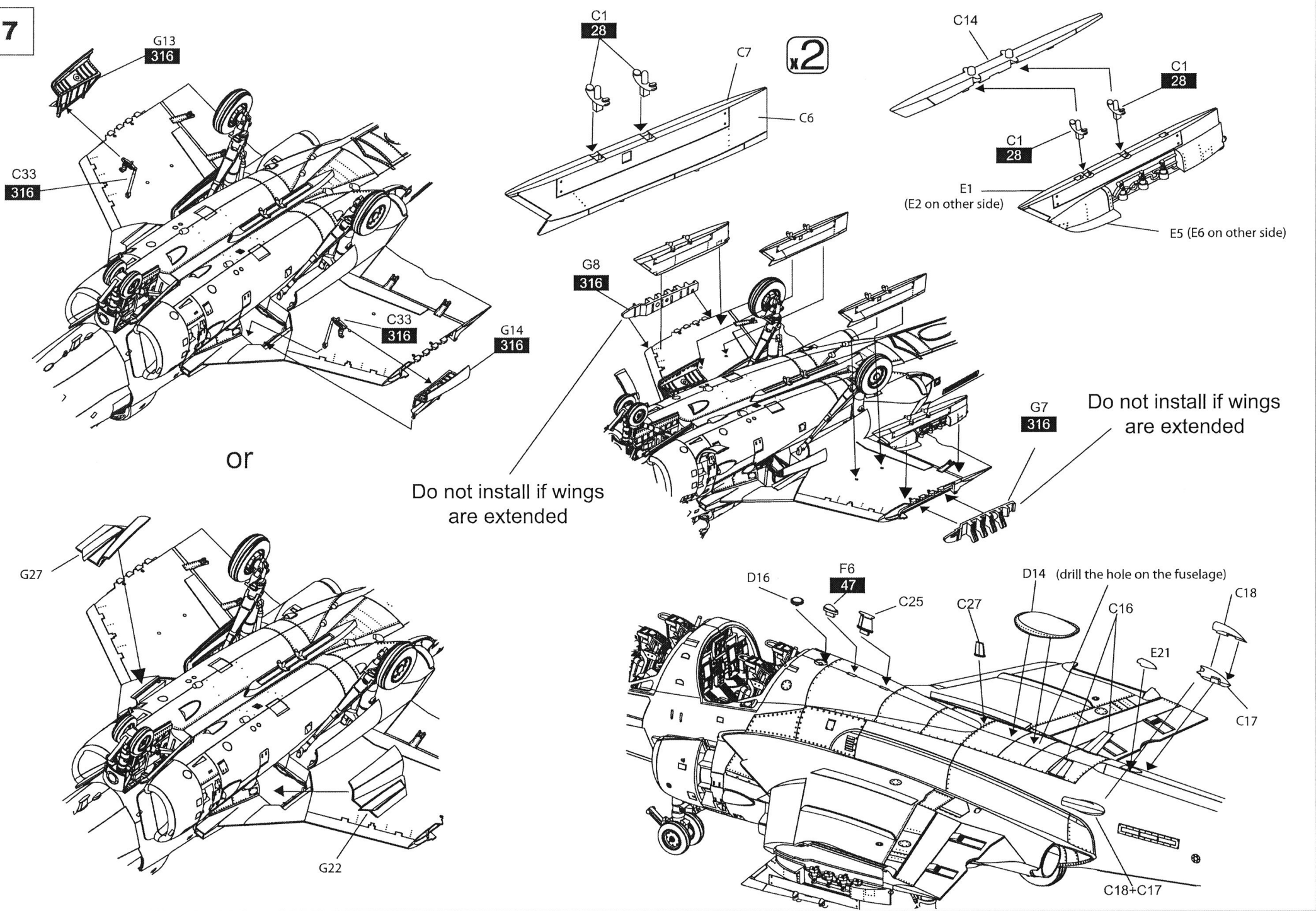
316 Inside

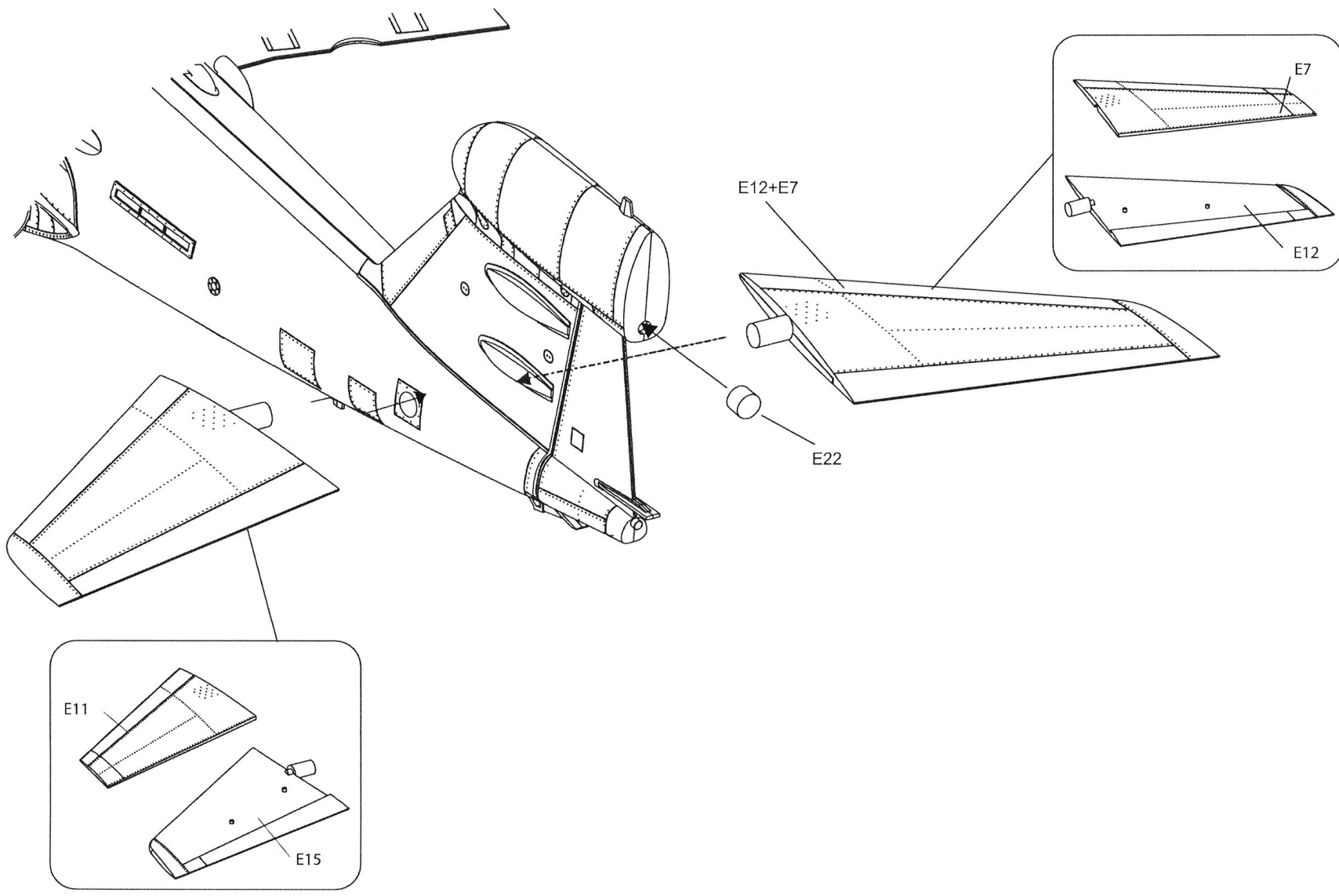
G5





7





wings folded up

C40

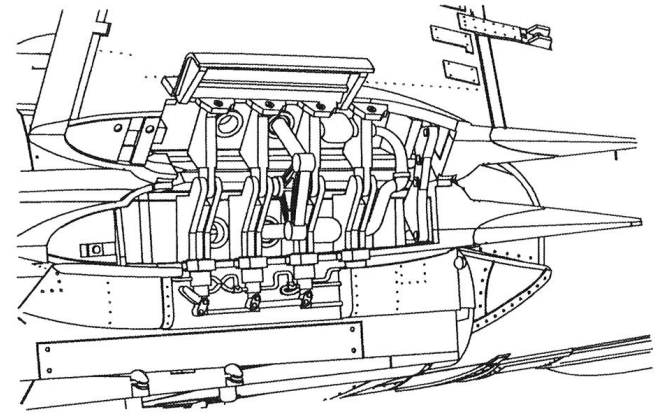
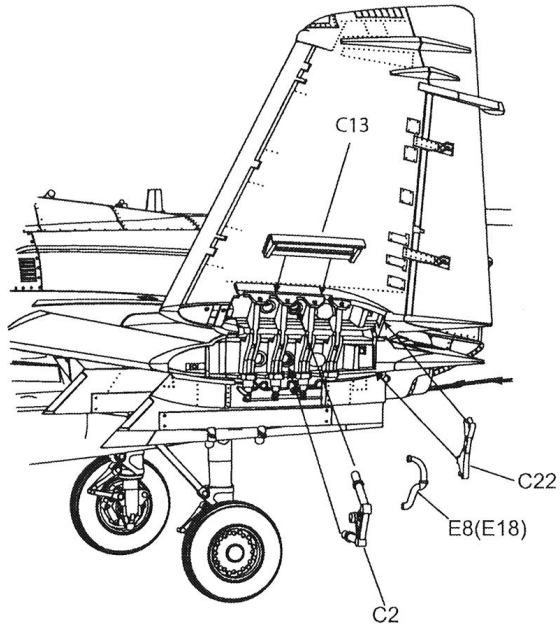
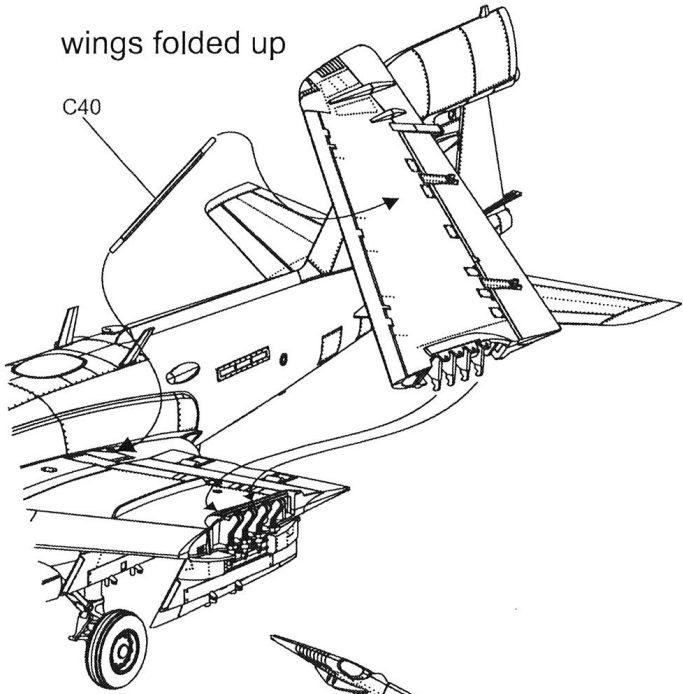
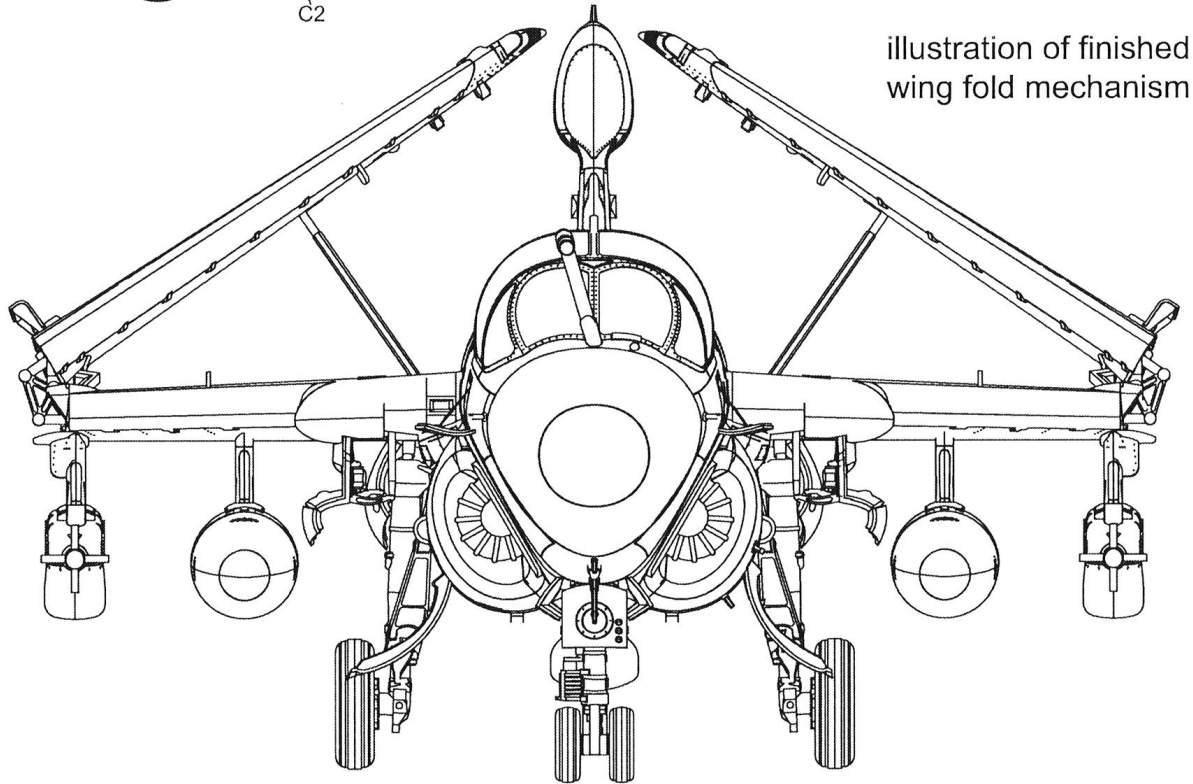
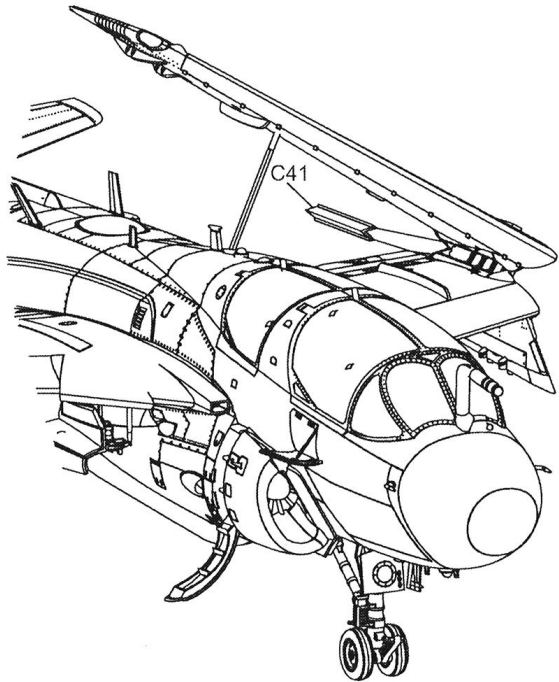
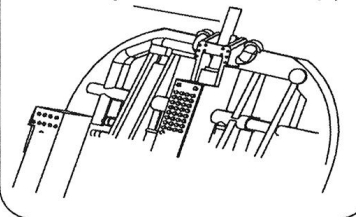


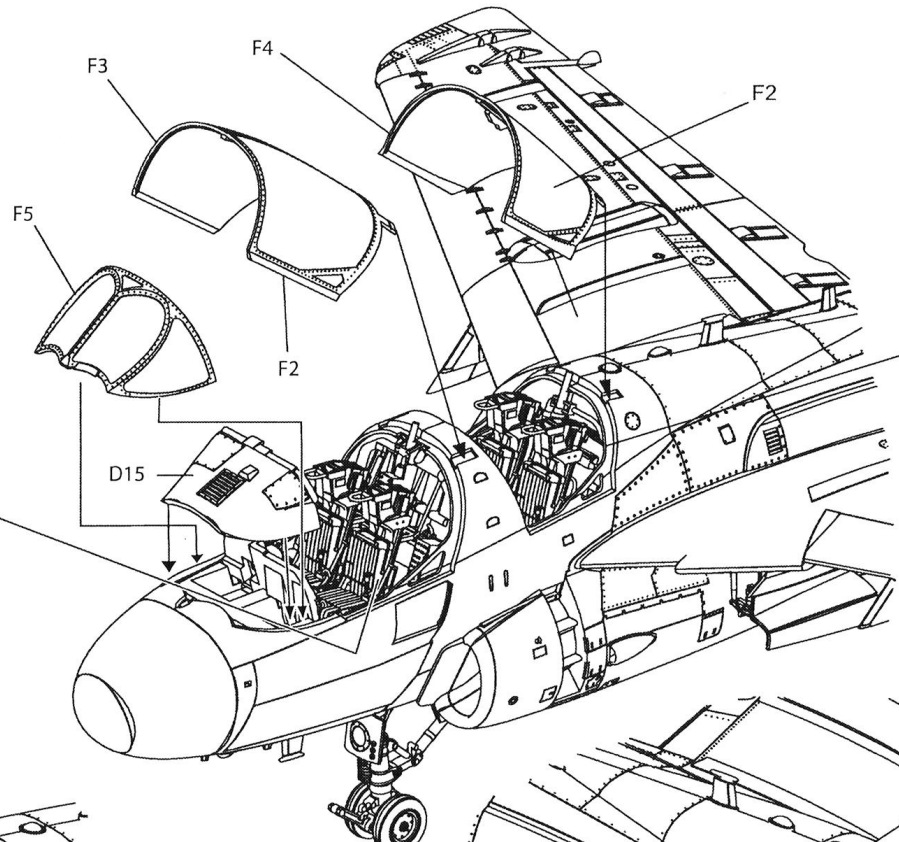
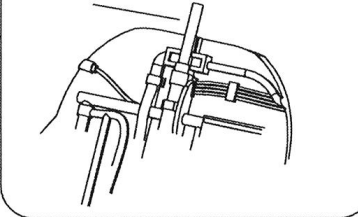
illustration of finished wing fold mechanism



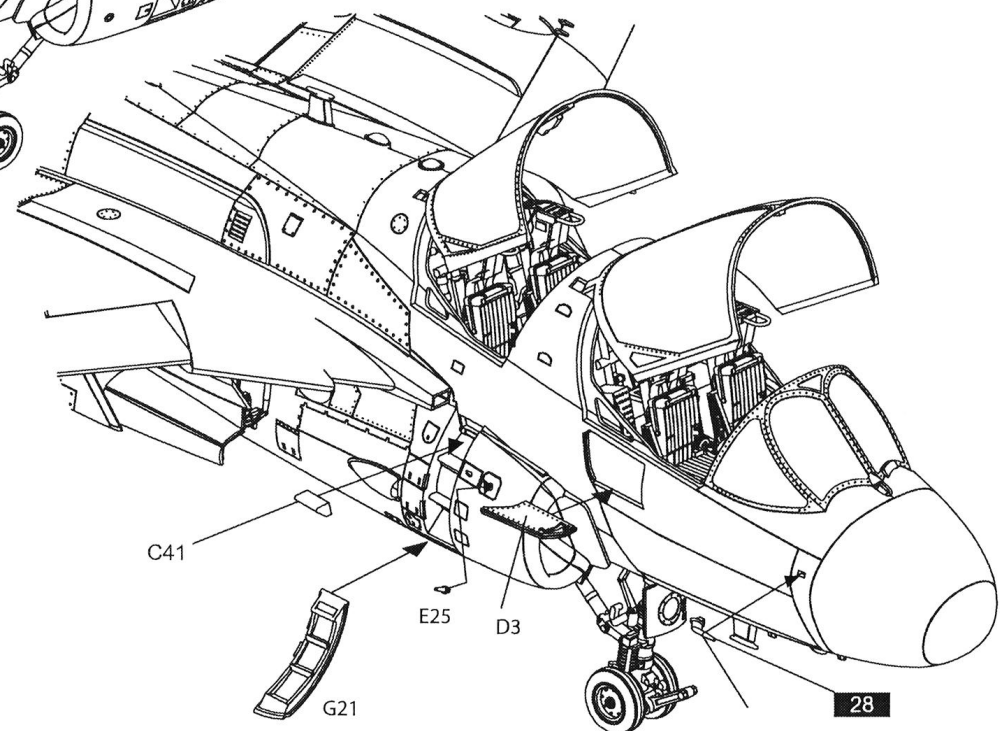
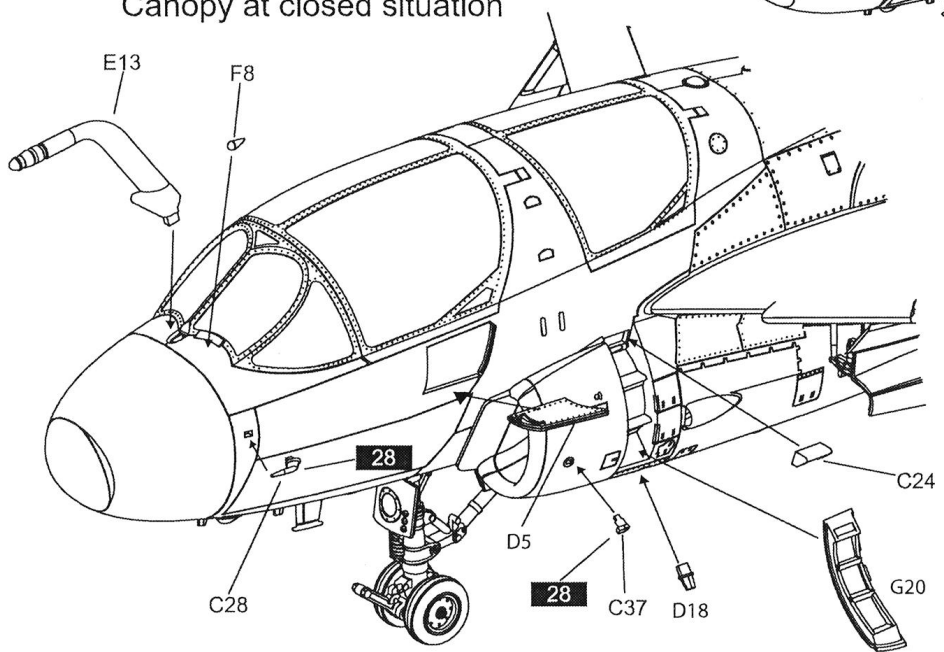
cut the pin if close canopy



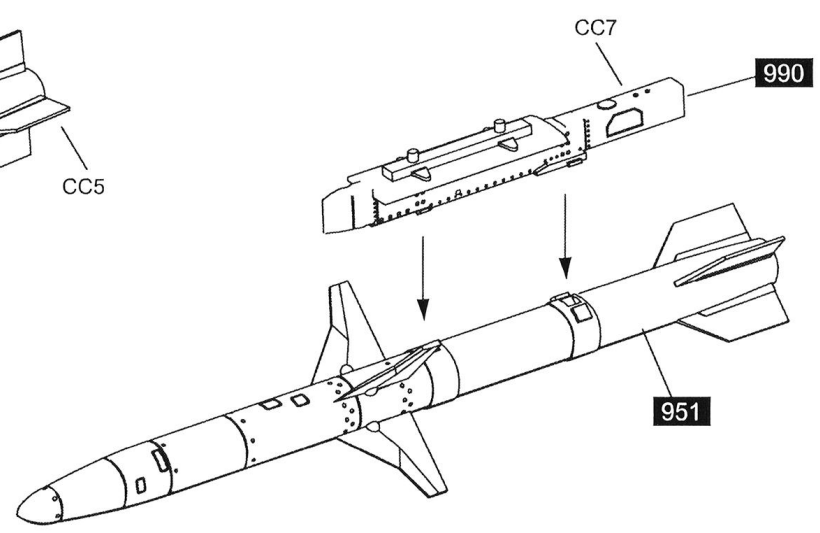
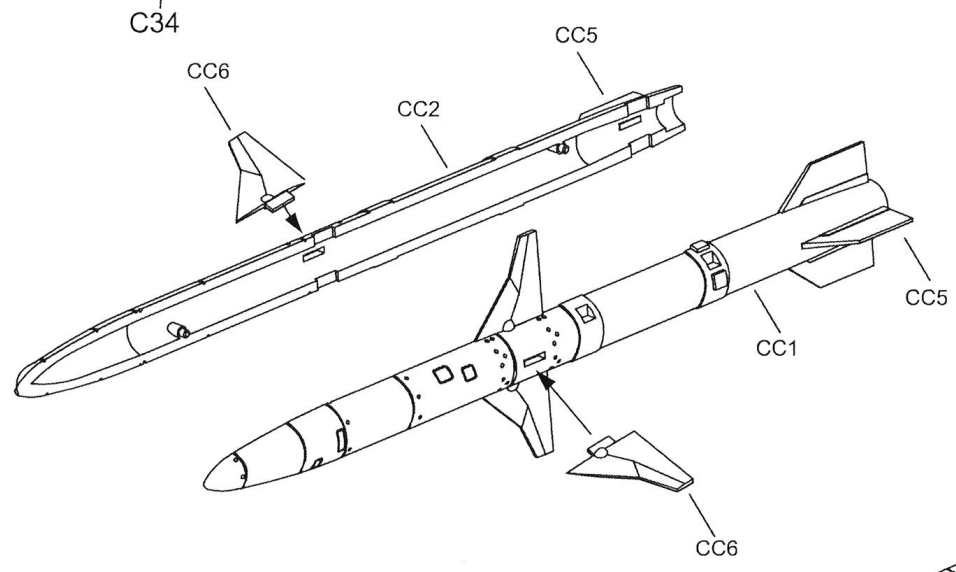
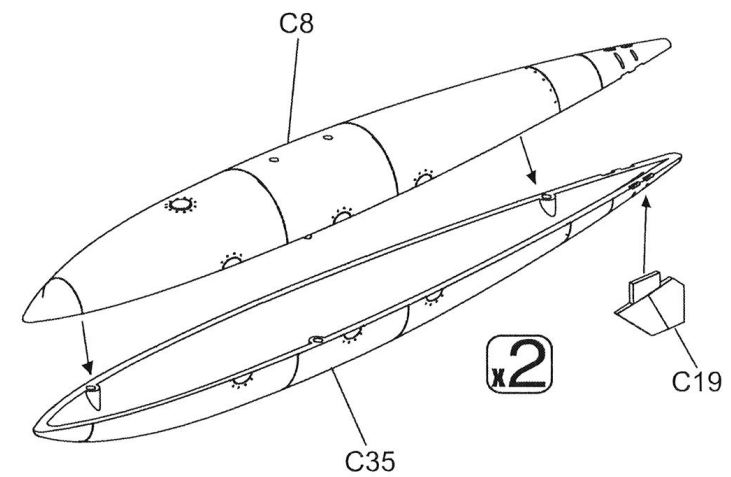
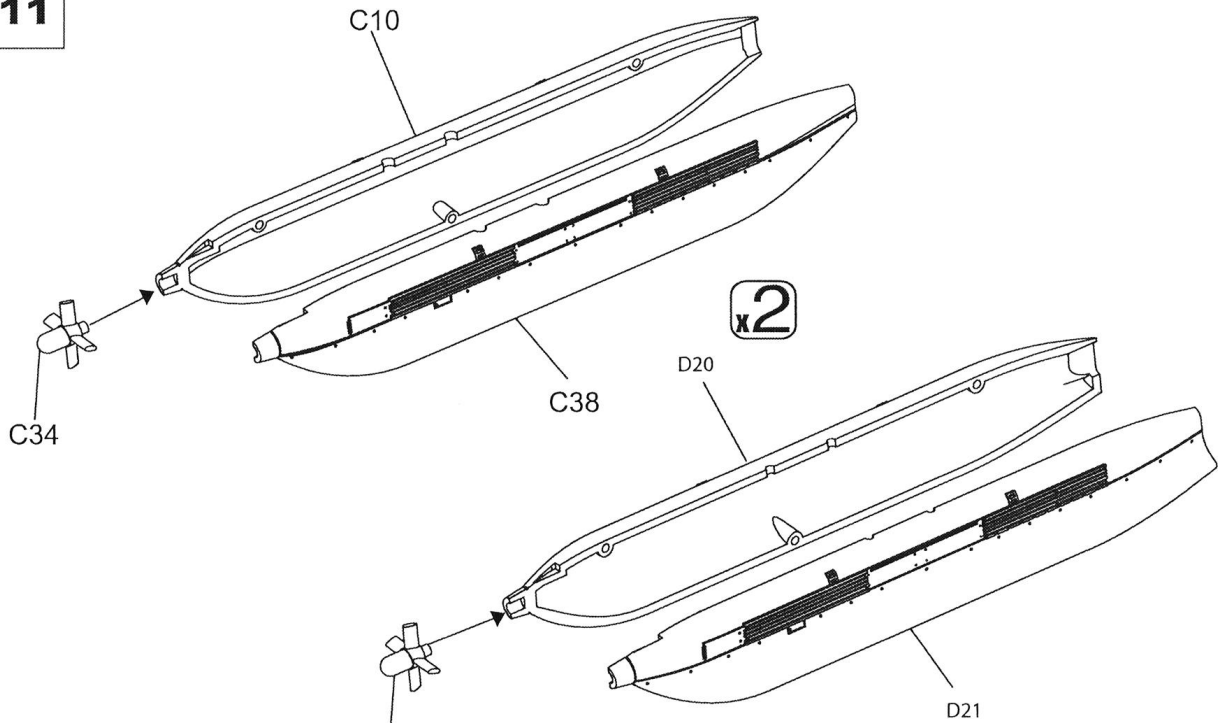
cut the pin if close canopy

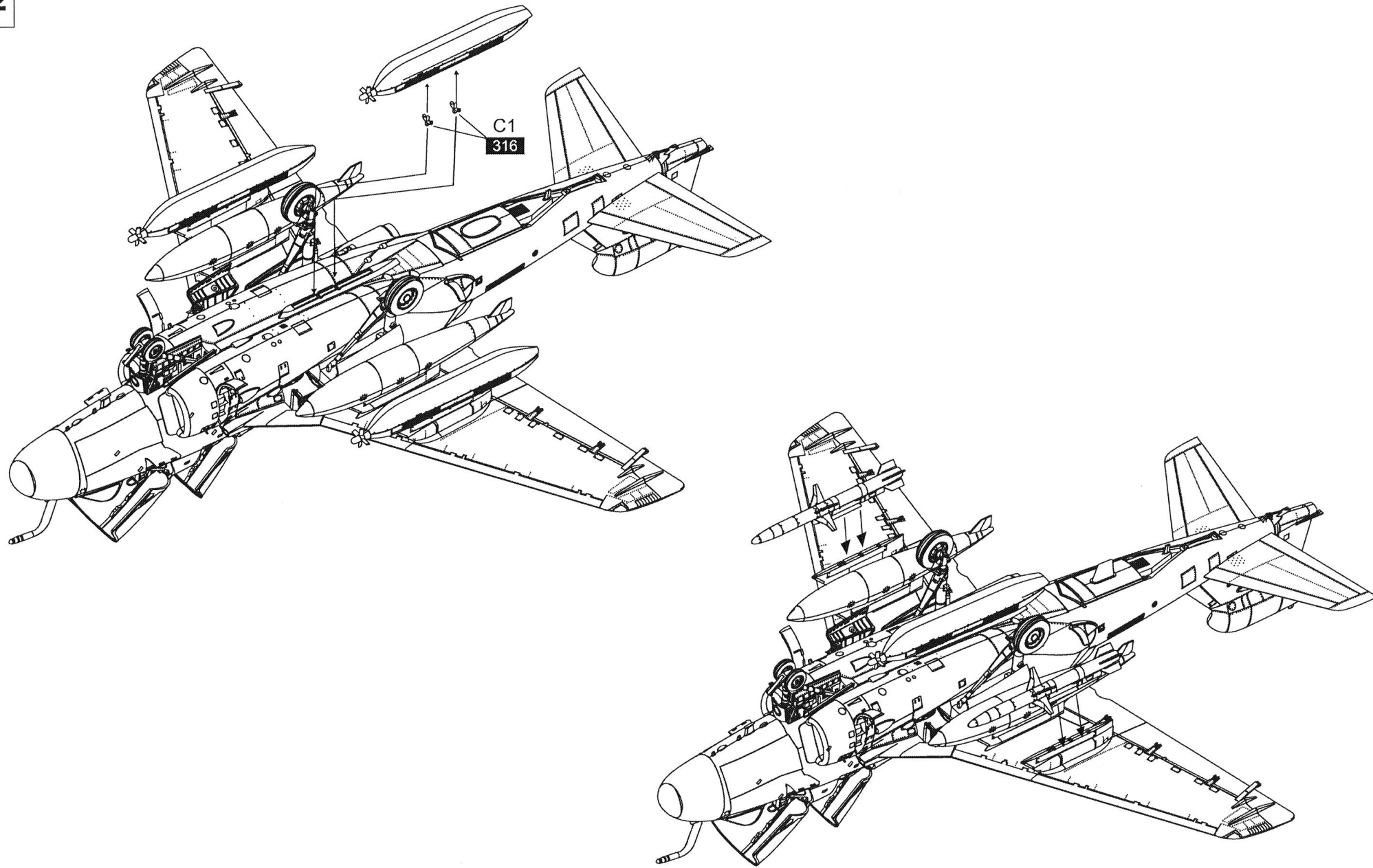


Canopy at closed situation









P14

EA-6B usually carries single AGM-88 on either side. On the other side, a ECM pod is carried.

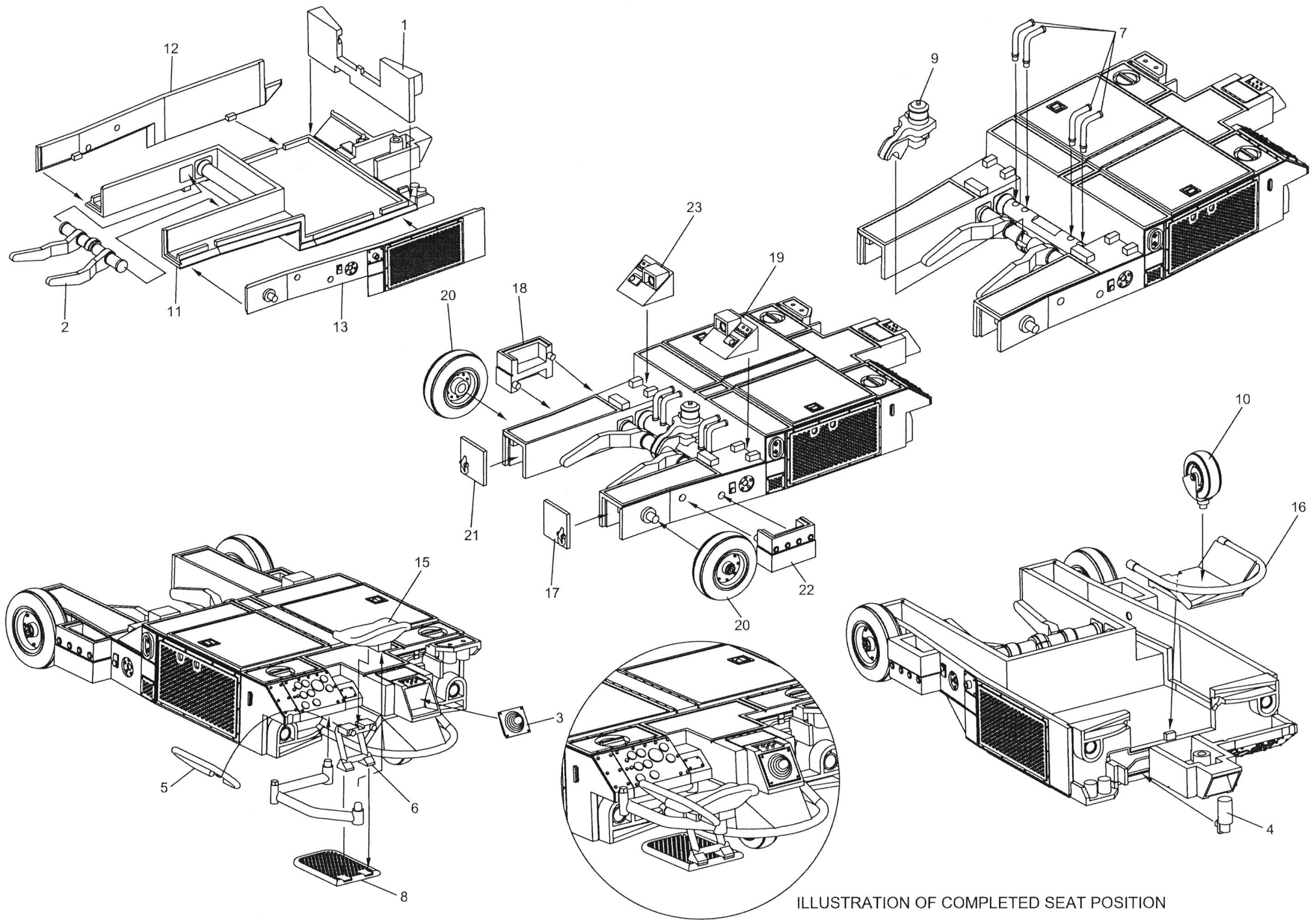
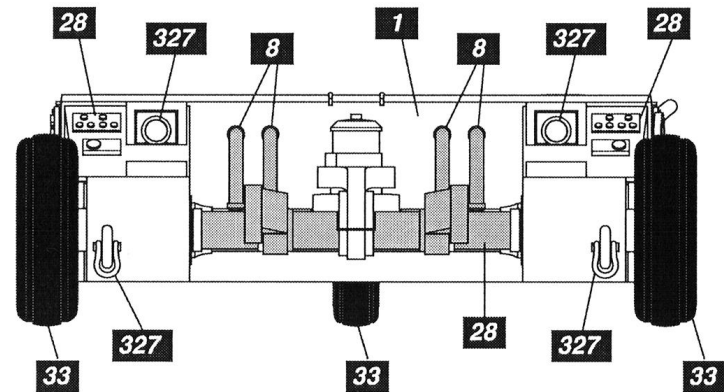
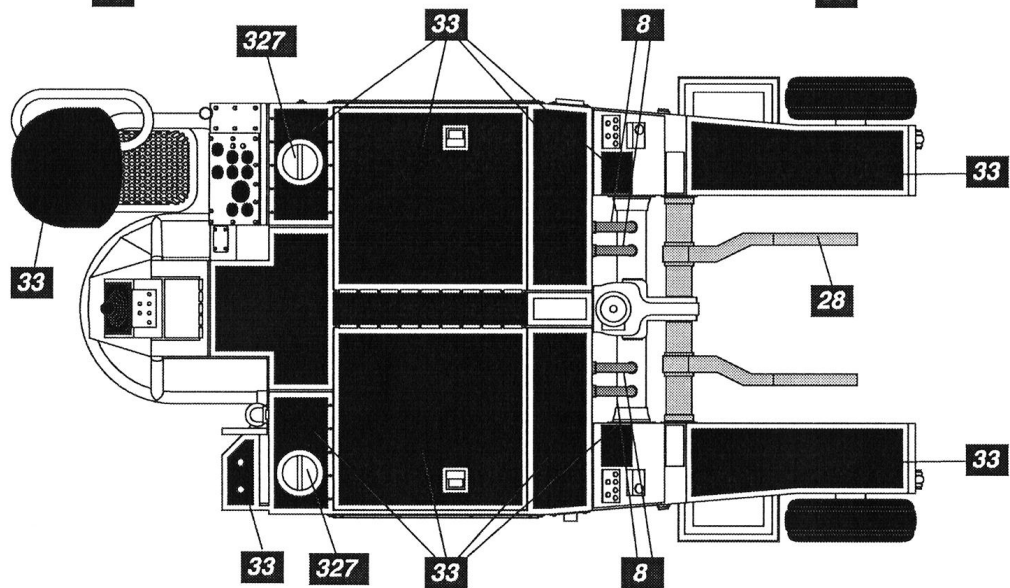
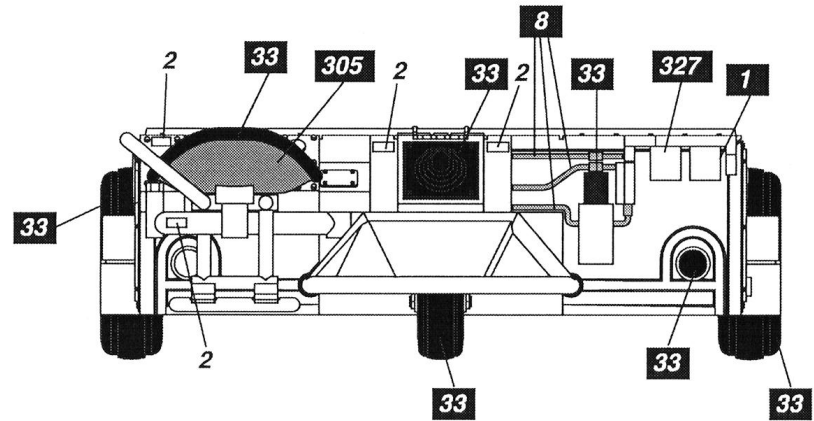
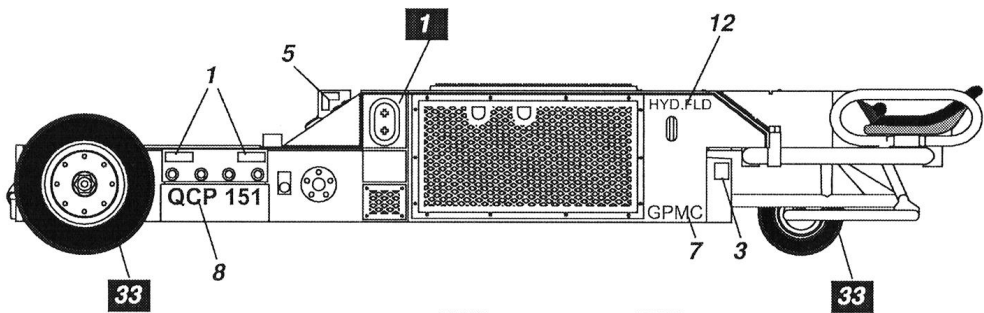
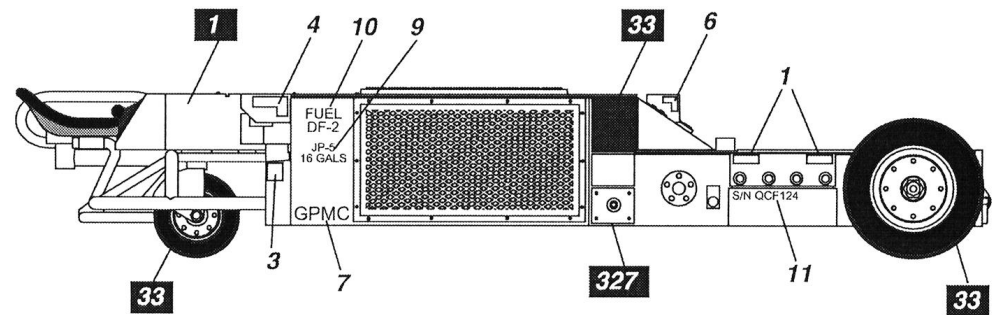


ILLUSTRATION OF COMPLETED SEAT POSITION

**1** WHITE   **8** SILVER   **28** GUN METAL   **33** FLAT BLACK   **305** GRAY   **327** RED

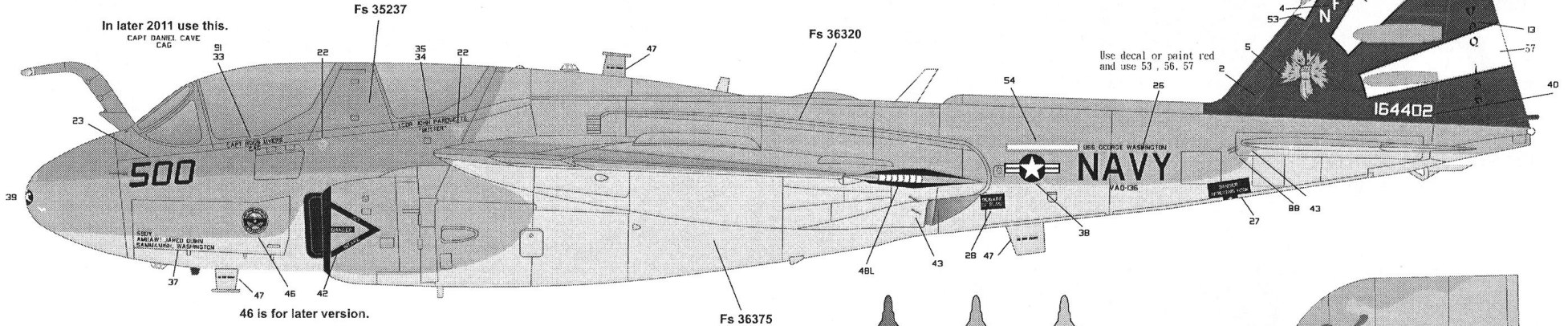
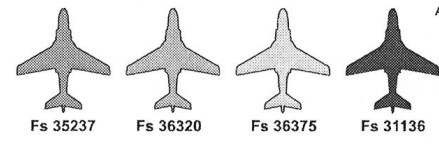


P16

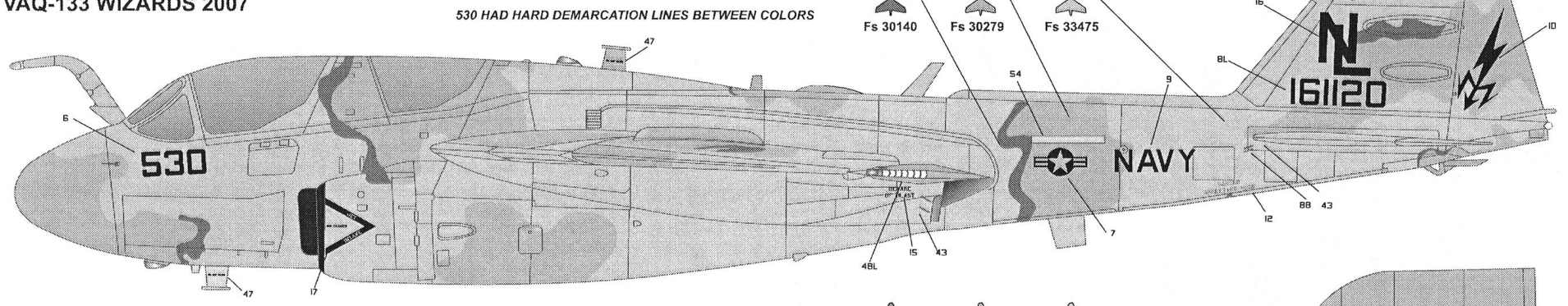
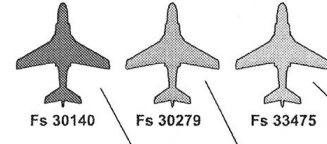
1/48 A/S32A-32 CARRIER DECK SMALL TRAILOR SW48005



**EA-6B 164402**  
**VAQ-136 GAUNTLETS 2011**



**EA-6B 161120**  
**VAQ-133 WIZARDS 2007**



**EA-6B 161349**  
**VAQ-133 WIZARDS 2007**

