

7

Hughes 500 MD, Kawasaki OH-6D AZ 7231 AZ 7323

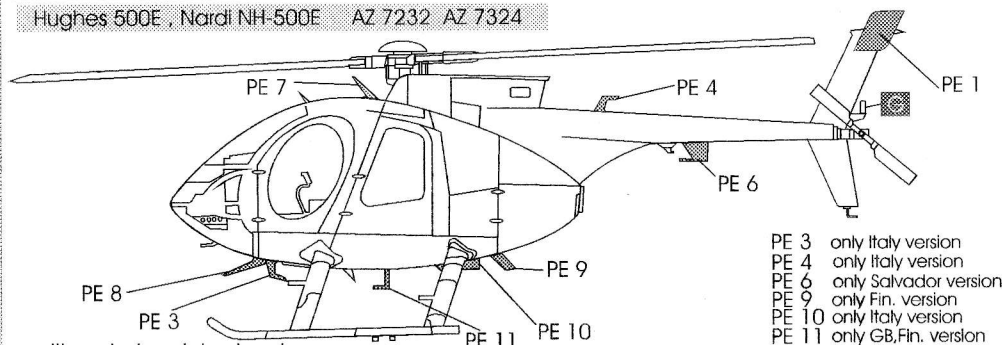
4



PE 5 only Japan version

position photo -etched parts:

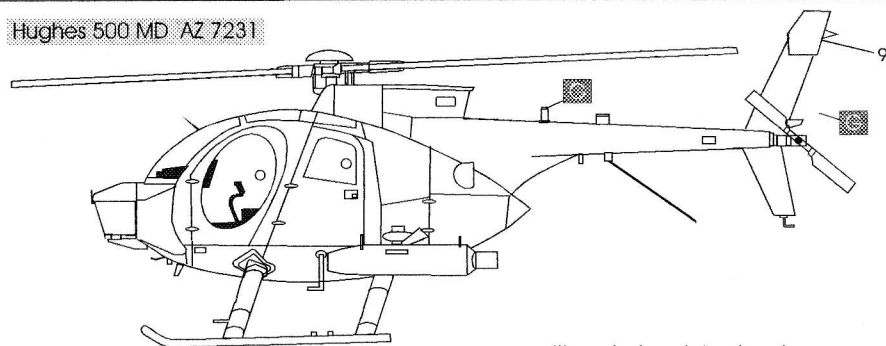
Hughes 500E, Nardi NH-500E AZ 7232 AZ 7324



PE 3 only Italy version
 PE 4 only Italy version
 PE 6 only Salvador version
 PE 9 only Fin. version
 PE 10 only Italy version
 PE 11 only GB, Fin. version

position photo -etched parts:

Hughes 500 MD AZ 7231



position photo -etched parts:



A	Black
B	White
C	Medium Grey
D	Light Grey
E	Steel
F	Silver
G	Red
H	Bronze

AZmodel
 Plastic kits

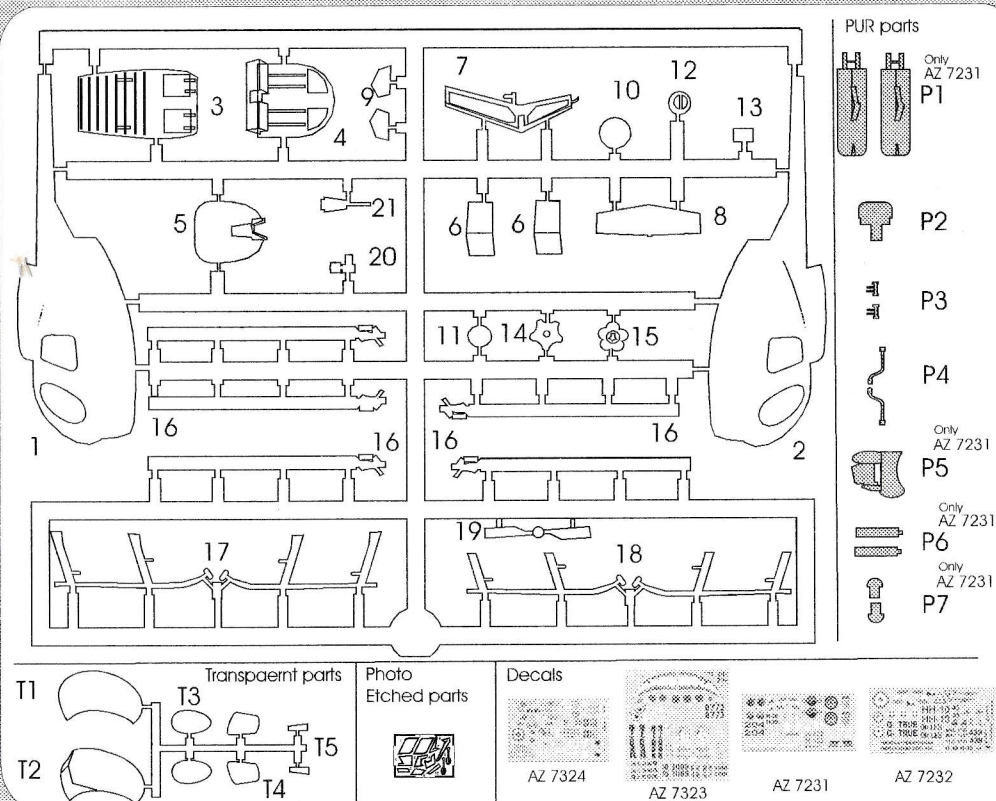
Hughes MD -500 E,MD Kawasaki OH-6D Nardi NH-500E

PLASTIC MODEL

AZ 7231, AZ 7232, AZ 7323, AZ 7324

SCALE : 1/72

The **MD Helicopters MD 500 series** is an American family of light utility civilian and military helicopters. The improved Hughes 500D became the primary model in 1976, with a more powerful engine, a T-tail, and new five-blade main rotor; a four-blade tail rotor was optional. The 500D was replaced by the 500E from 1982 with a pointed nose and various interior improvements such as greater head and leg room. McDonnell Douglas acquired Hughes Helicopters in January 1984, and from August 1985 the 500E and 530F were built as the MD 500E and MD 530F Lifter. Following the 1997 Boeing/McDonnell Douglas merger, Boeing sold the former MD civil helicopter lines to MD Helicopters in early 1999. Military variants are marketed under the MD 500 Defender name.



T1

T2

Transpaernt parts

Photo
Etched parts

Decals

AZ 7324

AZ 7323

AZ 7231

AZ 7232


 OPTIONAL
 VOLBA

 BEND
 OHNOUT

 OPEN
 HOLE
 VYVRTAT
 OTVOR

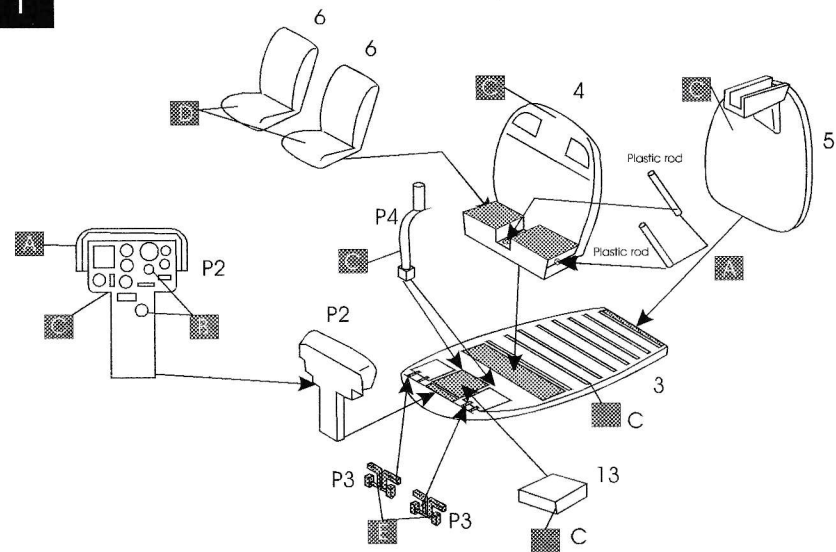
 SYMMETRICAL
 ASSEMBLY
 SYMETRICKÁ
 MONTÁŽ

 A NOTH
 ZÁREZ

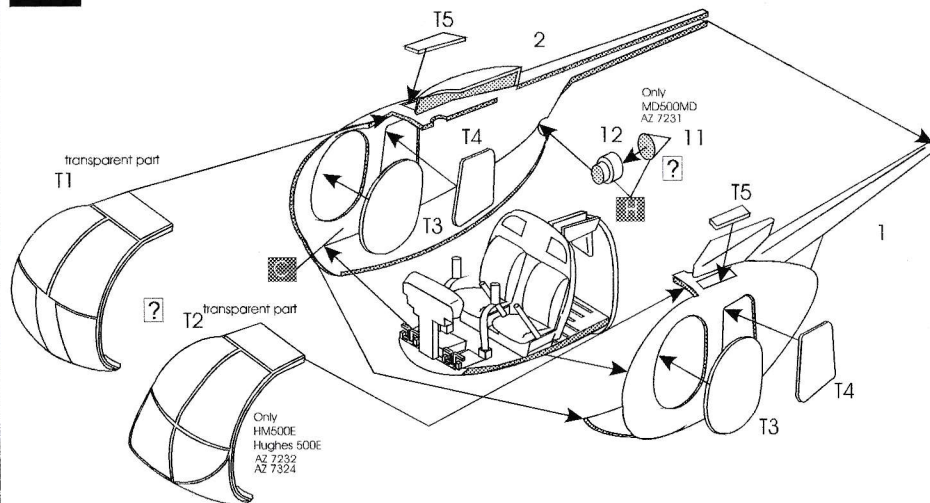
 REMOVE
 ODŘÍZNOUT

2

1

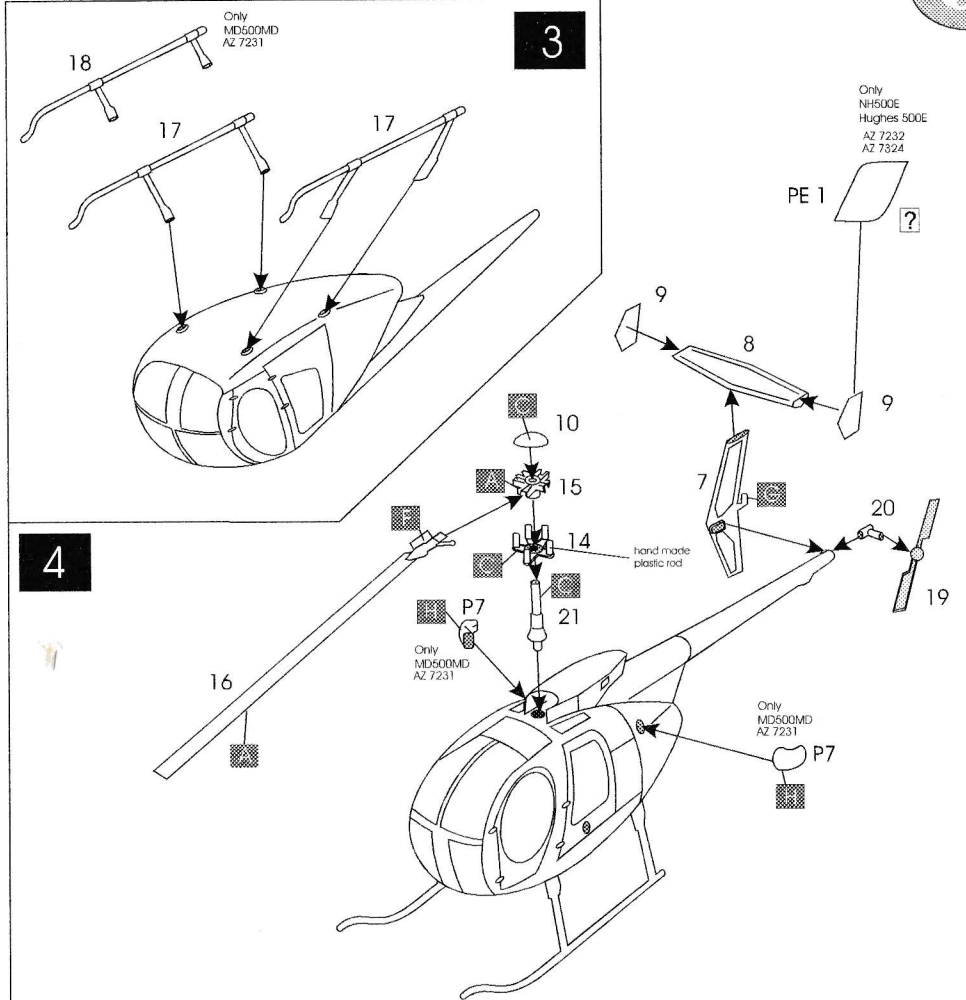


2

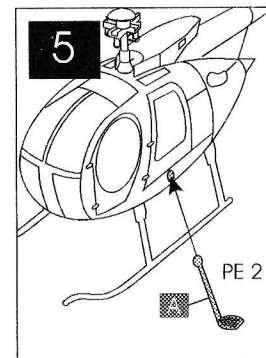


3

3



4



6

